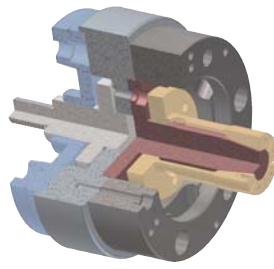


CDI 支撑芯轴卡盘

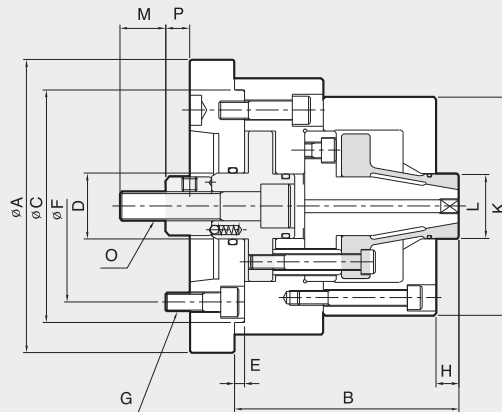
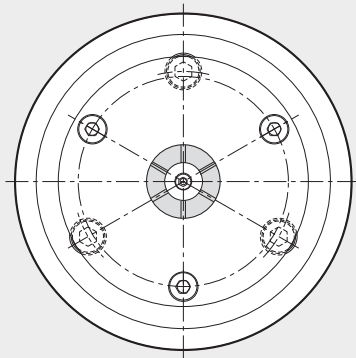
Inside-Clamping Mandrel

- Pulled down to location for accuracy
- Collet changes quickly for machining a variety of work pieces
- Air sensing can be added for automatic loading

- 内撑夹紧工件，可保证零号的垂直度和同轴度
- 通过更换筒夹，可兼容多种零件
- 具有紧贴加工件基准面的功能(可选)



SPECIAL CHUCK



Dimensions

	ΦA	B	ΦC(h7)	ΦD	E	ΦF	G	H	ΦK	ΦLmax.	ΦLmin.	M	O	Pmax.	Pmin.
CDI-06	165	115	150	35	6	104.8	M10	15	L+25	15	40	40	M16	26	23
CDI-08	200	135	170	42	6	133.4	M12	20	L+35	90	40	45	M20	33	29
CDI-10	250	180	230	52	6	171.4	M16	35	L+40	130	90	55	M24	36	32
CDI-12	300	220	230	52	6	171.4	M16	40	L+50	180	130	55	M24	37	32

Specifications

Type	Max. Clamping Force	Max. Drawbar Pull	Collect Expansion	Plunger Stroke	Chucking Dia.		Max. Speed	Weight	GD ²
	夹紧力 [kgf]	拉杆最大拉力 [kgf]	夹头张开 [mm]	拉柱行程 [mm]	夹持范围 [mm]		最高转速 [r.p.m.]	重量 [kg]	容许工作惯性 [kgf·m ²]
CDI-06	4000	1500	0.8	3	Max. 40	Min. 15	4500	7	0.06
CDI-08	7000	2500	1.0	4	Max. 90	Min. 40	4000	14	0.19
CDI-10	12000	4000	1.0	4	Max. 130	Min. 90	3300	34	0.71
CDI-12	15000	4800	1.4	5	Max. 180	Min. 130	2500	55	2.0